

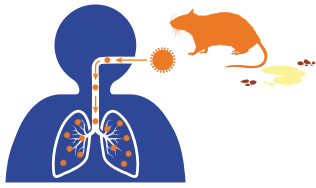
# Hantavirus...

...is not a new virus.

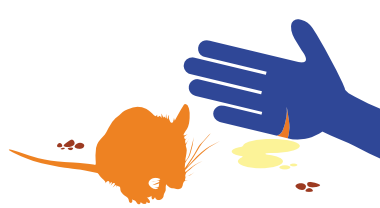
## What are hantaviruses?

Hantaviruses are a group of viruses carried by rodents; they can cause severe disease in humans. It is present in the animal's urine, saliva and faeces.

## TRANSMISSION Human infections can occur.



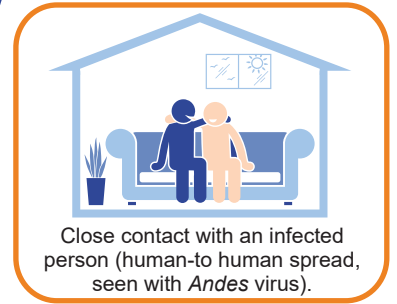
Most commonly by inhaling air that contains tiny particles (aerosols) contaminated with infected rodents' excretions.



Direct contact of broken skin or mucous membranes with contaminated urine or other excretions.



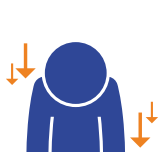
Rarely, through the bite of an infected rodent.



Close contact with an infected person (human-to-human spread, seen with *Andes virus*).

## SYMPTOMS Take 1 to 8 weeks to appear.

Initial symptoms are flu-like and include:



Fatigue



Fever



Headache



Muscle aches



Gastrointestinal symptoms (nausea, vomiting, diarrhoea and abdominal pain)



Diseases vary by type of virus and geographical location:

Hantavirus cardiopulmonary syndrome (HCPS)	Haemorrhagic fever with renal syndrome (HFRS)
Affects the lungs and heart	Affects the kidneys and blood vessels
Found in the Americas	Found in Asia and Europe
Fatal in up to 50% of cases	Fatal in about 1 to 15% of cases
Late symptoms include cough, shortness of breath, chest tightness, fluid in lungs	Late symptoms include flushing of the face, inflammation, redness of the eyes or a rash, bleeding from the skin, conjunctiva, and mouth

Andes virus causes hantavirus cardiopulmonary syndrome (HCPS).

## PREVENTION There is no vaccine for HCPS. Vaccines against HFRS are available in some countries.



Avoid direct contact with rodents, their faeces, saliva, urine, or nests.



Pay attention to general hygiene and food storage.



Wash your hands thoroughly before eating or touching your face.



Avoid close contact with people who are sick.

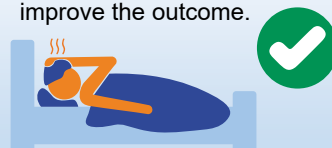
### DIAGNOSIS

is confirmed by lab test.



### TREATMENT

There is **no specific treatment**. Care focuses on relieving symptoms and providing supporting medical treatment. Early hospitalisation and intensive care improve the outcome.



### CONTACT TRACING

Contacts are closely monitored and treated promptly if they develop symptoms.



Keep up to date with our alerts and information on the International SOS location guides <https://www.internationalsos.com/> and the Global Health Threats website <https://pandemic.internationalsos.com/diseases/hantavirus>

DISCLAIMER: This infographic has been developed for educational purposes only. It is not a substitute for professional medical advice. Should you have questions or concerns about any topic described here, please consult your medical professional.

© Copyright 2026 AEA International Holdings Pte. Ltd. All rights reserved.

