

# Nipah Virus

Nipah Virus is a rare but potentially serious infection.

## TRANSMISSION



Direct contact with animals - sick pigs/bats - including exposure to their urine or saliva



Eating fruit or drinking unpasteurised date palm juice contaminated by bats



Human to human - close contact with an infected person

## SYMPTOMS Some people have NO symptoms.



Fever



Headache



Muscle pain



Pneumonia



Encephalitis  
(inflammation of the brain)

**SEVERE:**

Can be fatal.

## PREVENTION No vaccine is available.



Pay strict attention to hygiene, wash hands often with soap and water



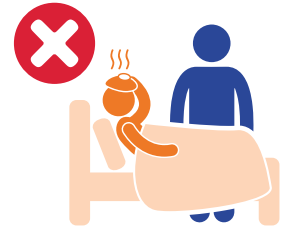
Wash all fruit thoroughly



Do not consume raw date palm juice or any fruit that has been bitten by bats or other animals



Stay away from bats and places bats frequently visit or nest



Avoid close contact with sick people

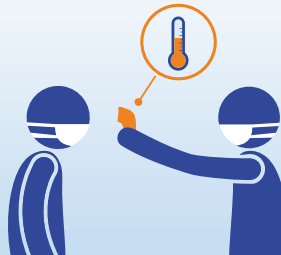
### DIAGNOSIS

Lab tests.



### CONTACT TRACING

Contacts are closely monitored and treated promptly if symptoms develop.



### TREATMENT

No specific treatment. Care focuses on relieving symptoms and providing supportive medical treatment.



Keep up to date with our alerts and information on the International SOS location guides <https://www.internationalsos.com/> and pandemic website <https://pandemic.internationalsos.com/Diseases/Nipah-virus>

DISCLAIMER: This infographic has been developed for educational purposes only. It is not a substitute for professional medical advice. Should you have questions or concerns about any topic described here, please consult your medical professional.

© Copyright 2026 AEA International Holdings Pte. Ltd. All rights reserved.